



**STRUCTURAL  
EXCELLENCE,  
TRANSFORMING  
VISIONS INTO REALITY**



COASTAL PEB SOLUTIONS PVT. LTD.

[www.coastalpebs.com](http://www.coastalpebs.com)

In a world where space, time, and budget constraints can be daunting, there's a simple solution that empowers you to create the ideal structure you need. Trust in the name that stands out – Coastal PEB Solutions Pvt Ltd.

We possess everything required to craft a robust shelter of any size, whether it's small, medium, large, or even the largest imaginable. Our unwavering commitment to quality and standards is rooted in our 40-year legacy of values and philosophy.



The story of **Coastal** dates back to 1983. Over the years, this humble beginning has blossomed into a formidable steel fabrication powerhouse. At the heart of our mission lies an unwavering commitment: to consistently provide top-tier products and guarantee comprehensive customer satisfaction.

The evolution of Coastal reflects a story of resilience, growth, and an unyielding dedication to excellence. From our initial ventures in Autonagar to becoming a cornerstone in the steel fabrication industry, we have navigated a path defined by innovation and quality. With a focus on meeting and exceeding customer expectations, we continually refine our processes and offerings.

Through the decades, Coastal has stood as a testament to the values of integrity, craftsmanship, and customer-centricity. As we look back on our rich history, we eagerly anticipate the future, where we aim to set even higher benchmarks for quality, service, and innovation in the ever-evolving landscape of steel fabrication. Join us on this journey, where every chapter tells a story of growth, reliability, and a steadfast commitment to excellence.

### **Vision**

Our vision is to empower businesses, foster lasting relationships, and offer innovative PEB solutions that establish us as a leader in the industry.

### **Mission**

Coastal PEB Solutions is dedicated to revolutionizing the PEB industry by spearheading innovation, challenging norms, and fostering a positive impact on the built environment. We are committed to delivering excellence and exceeding customer expectations, constantly innovating and setting new benchmarks, to maintain our leadership position in the field.





# OUR EXPERTISE

Unlocking boundless innovation, our team excels in crafting solutions tailored for spaces with unique constraints. Empowered by cutting-edge software, we seamlessly navigate the intricacies of PEB structures. From low to high complexities, our consultants possess the keen ability to scrutinize requirements, rectify oversights, and preempt costly errors before the building process begins.

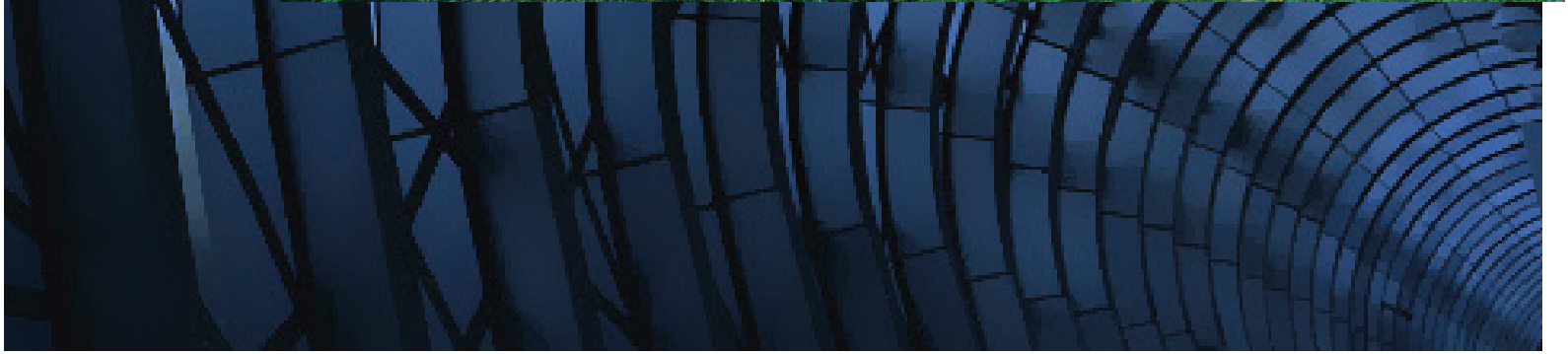
At the helm, our top management team is a powerhouse of hands-on leadership, fueled by unwavering motivation and decades of industrial expertise. With founders boasting over 40 years of professional qualification and a commitment to excellence, dedication, and exceptional work ethic, we redefine the standard for ingenuity in every project.

- Cutting-edge production hub with state-of-the-art facilities
- Our Quality Assurance and Process (QAP) Team employs a rigorous monitoring process, overseeing quality from raw materials to the final product at every step
- Utilizing the latest and most advanced software for optimal designs
- Our leadership boasts a wealth of experience in the PEB Industry in India, ensuring expert management at every level
- Safety is our top priority, and we adhere to the highest standards at all stages of production and execution
- Enjoy peace of mind with our sequential dispatch system, guaranteeing on-time project completion
- Benefit from our in-house engineering team, delivering competitive and intricate structural designs with precision



## Manufacturing Facilities

Discover precision manufacturing at Coastal PEB's cutting-edge facility in Autonagar, Guntur. Equipped with advanced machinery, including Pull Through Beam Welding Line, Sub Arc Welding Machine, C & Z Purlin, Roof Sheeting Mill, Radial Drills. Our state-of-the-art facility ensures quick and high-quality production. With a production capacity of 10,000 MT per year, trust Coastal PEB for top-notch results.



# PRE ENGINEERED BUILDINGS

Discover practical, budget-friendly solutions with Coastal PEB's innovative Pre-Engineered Buildings. Ideal for warehouses, factories, and small-scale units, our steel structures offer flexibility, quick deployment, and top-notch quality in design. Your space, time, and budget constraints met effortlessly.

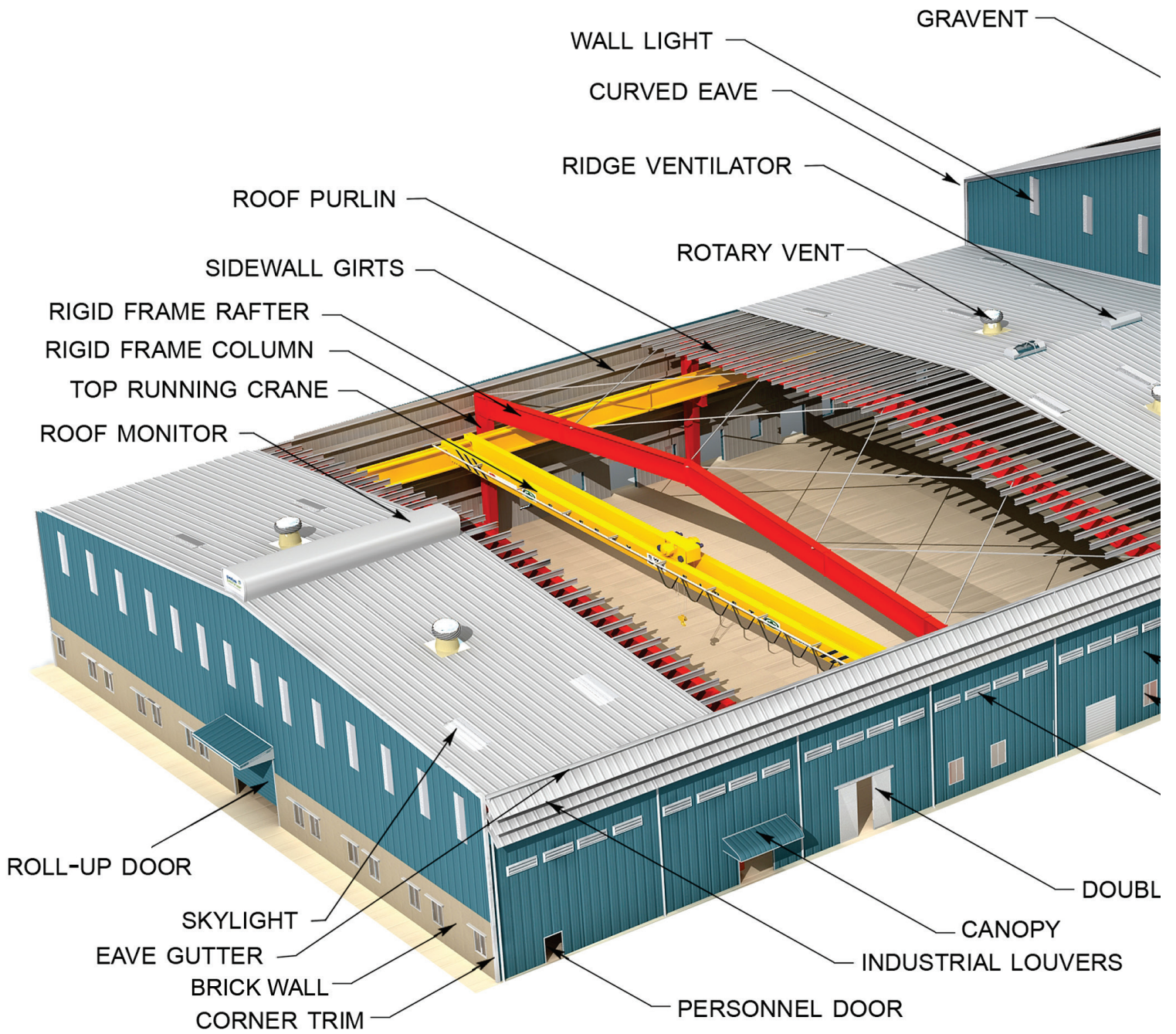
## Benefits of PEB

The greatest advantage is, PEBs can be set up on site in just 5 to 8 weeks, conventional steel structures can take as much as 8 to 15 weeks. Plus, the unique techniques implemented for fabrication make it 20% lighter than regular steel designs. On top of it all, no welding or fabrication is required at the construction site; resulting in greater speed and efficiency.

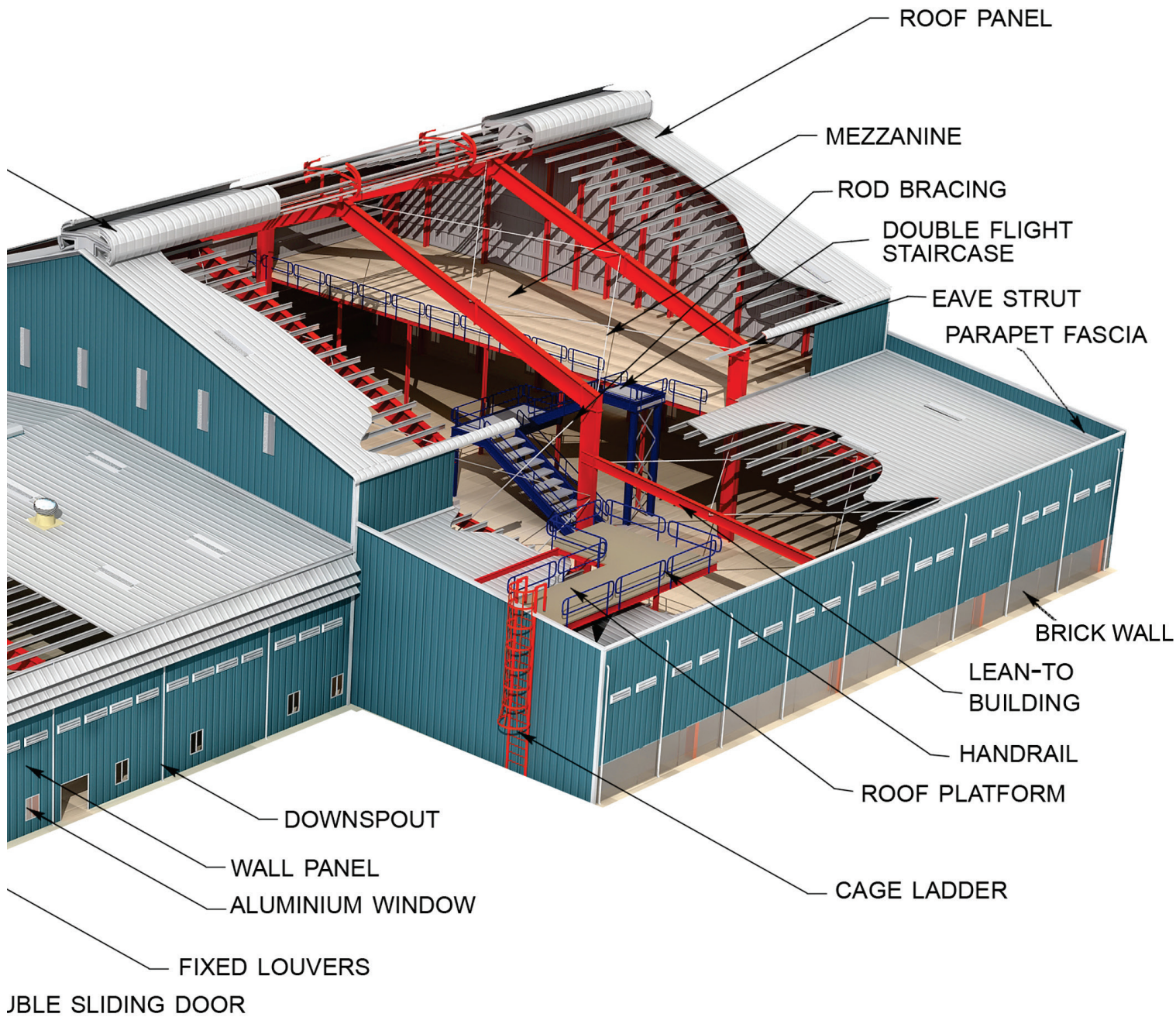


## Applications

- Factories
- Auditoriums
- Sports Halls
- Cold Store
- Commercial Showrooms
- Schools
- Warehouses
- Convention Centers
- Shopping Malls











# STRUCTURAL STEEL

Embark on a seamless journey of design, fabrication, and installation expertise with us. Our specialization extends to crafting robust steel structures for diverse industrial sectors within the infrastructure realm, including:

- Power Plants
- Cement Plants
- Water & Sewerage Treatment Plants
- Textiles/Chemical Plants
- Road & Rail Bridges and other major infrastructure projects.





## SOLAR STRUCTURES

Revolutionize your energy landscape with Coastal PEB's state-of-the-art solar structures. Our versatile solutions cater to various installation possibilities, whether it's seamlessly integrating solar panels into existing rooftops for an unobtrusive aesthetic or designing ground-mounted frames for optimal exposure. Coastal PEB's commitment to innovation ensures that your solar project aligns perfectly with your vision, delivering sustainability with style.

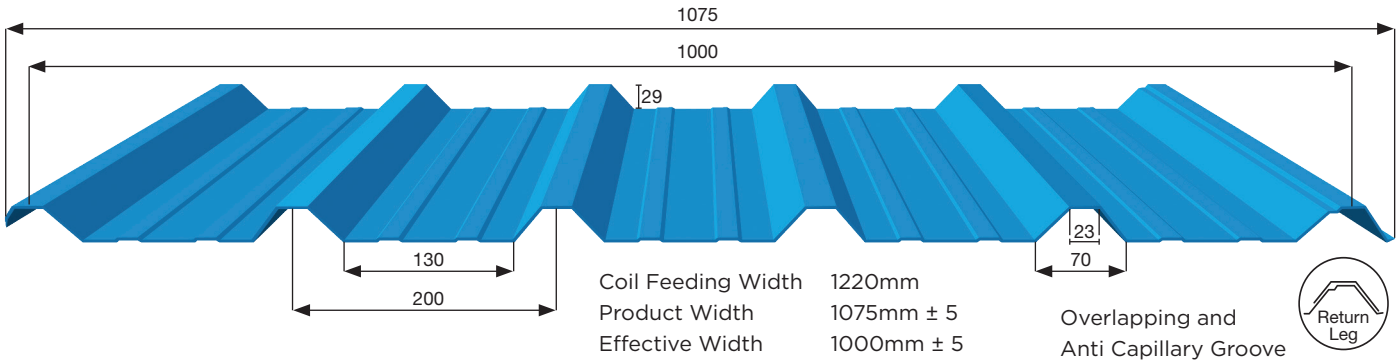
Discover the flexibility of solar installation with Coastal PEB - from carports that provide shade while generating clean energy to custom-designed solar canopies that turn open spaces into power hubs. Whatever your solar ambition, we have the expertise to bring it to life, ensuring your journey towards a greener future is both efficient and visually impactful.



# BUILDING COMPONENTS

The organization produces a diverse range of components to fulfill all building needs comprehensively.

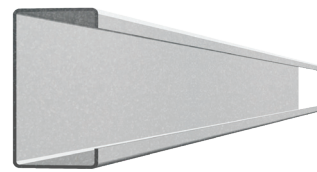
## TRAPEZOIDAL ROOFING PROFILE



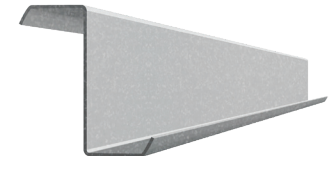
## STRUCTURAL PURLINS

C, Z, Purlins are manufactured on automatic high-end machines separately that are imported. The machine is run by individual gear box systems with 22 stages. This ensures that the desired shape and strength are near to perfect. The required web, flange and lip sizes are acquired by CNC operation and holes are punched automatically by PLC control.

C PURLIN

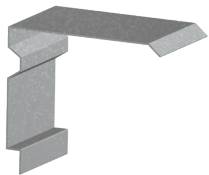


Z PURLIN

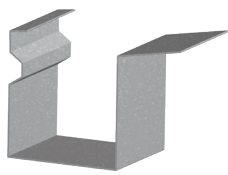


45° Lip

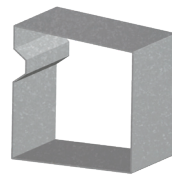
## TRIMS AND FLASHINGS



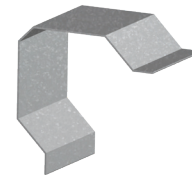
Gable trim



Rain Water Gutter



Gable End laps - L&R



Corner flashing



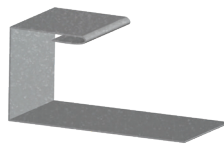
Drip trim



Down Spout



Profile Ridge



Framed Opening Trim



Valley Gutter

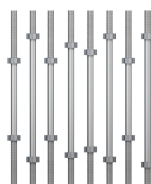
## ACCESSORIES



Cleats



Fish Plates



Sag rods



Anchor bolts



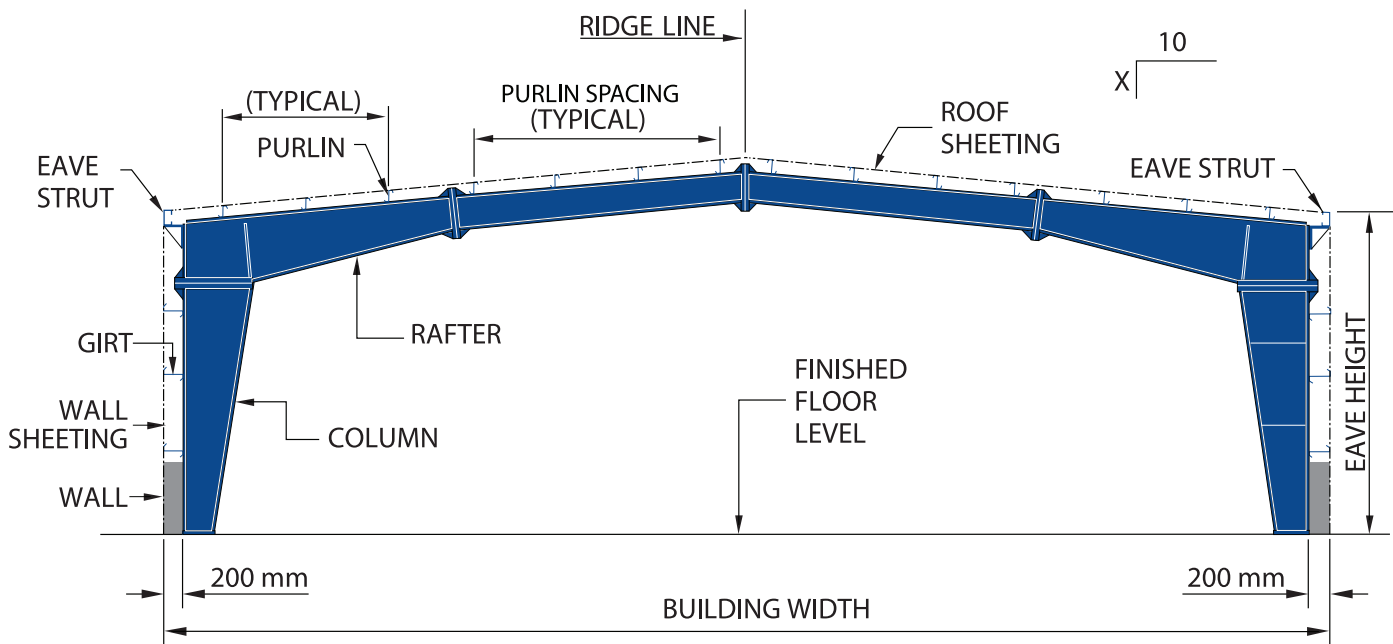
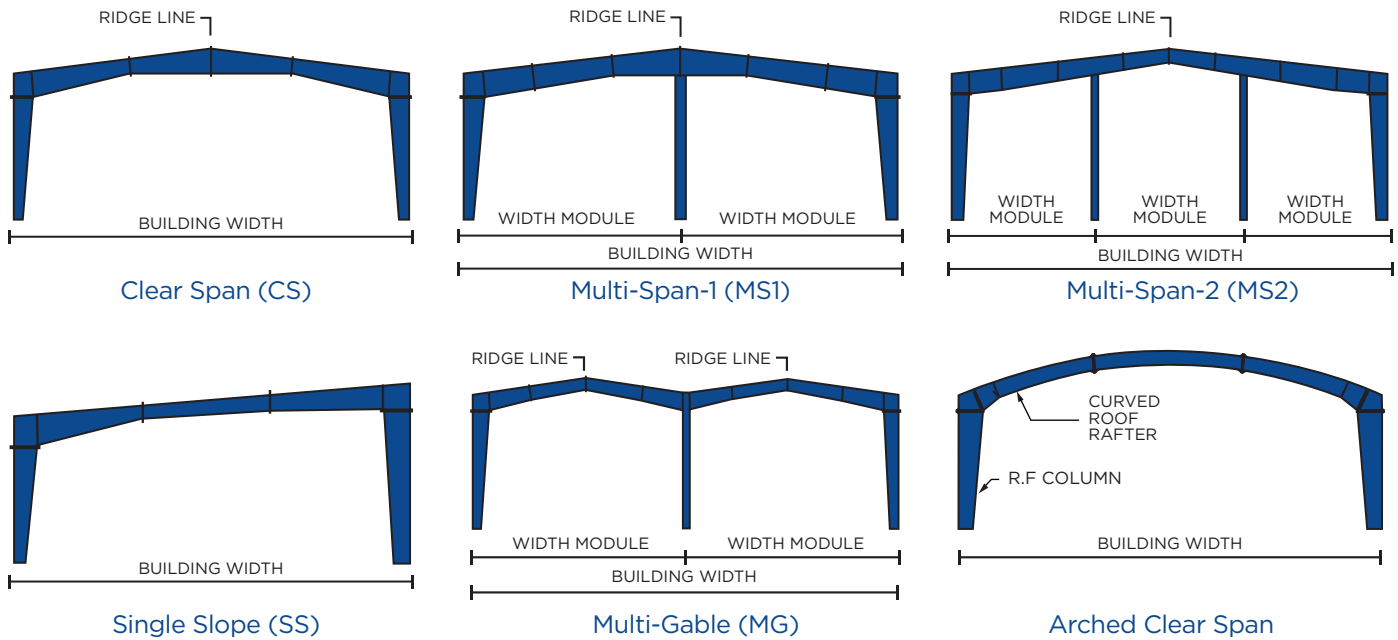
Self Threading Screws

# STANDARD COLOUR CHART



RAL code colour sheets are also supplied upon customer request based on quantity  
 Note: Colours shown above may vary from shades depending upon batch to batch and suppliers.

## TYPES OF FRAMES



# MAJOR PROJECTS

Crane Powder Works PEB and North Light Yanamadala - 1,64,000



VMC Warehouse Pulladigunta - 1,00,000



Ushodaya Vijayawada



Guntur Textile Park Gopalamvaripalem - 1,50,000





Mohan Spintex CMT Unit Mallavalli - 1,90,000



Mohan Spintex Boiler and husk shed Mallavalli



K4 Spices Chowdavaram



Venkatara Paper Mill Mallavalli - 1,20,000





# OUR MACHINERY



# OUR CLIENTS





**CORP OFFICE**

**Coastal PEB Solutions Pvt. Ltd.**

D.No: 5-5-35 , P/72 , 2nd Floor,  
Near Canara Bank  
Prashantinagar, Kukatpally (IE)  
Hyderabad, Telangana -500072

M: +91 79953 33535  
+91 84998 99999

E: [info@coastalpebs.com](mailto:info@coastalpebs.com)

**REGISTERED OFFICE &  
FACTORY**

Plot No. 31 & 32, Block No. 24,  
Phase 3 & 4, Autonagar,  
Besides Lorry Stand,  
Guntur - 522 001. Andhra Pradesh